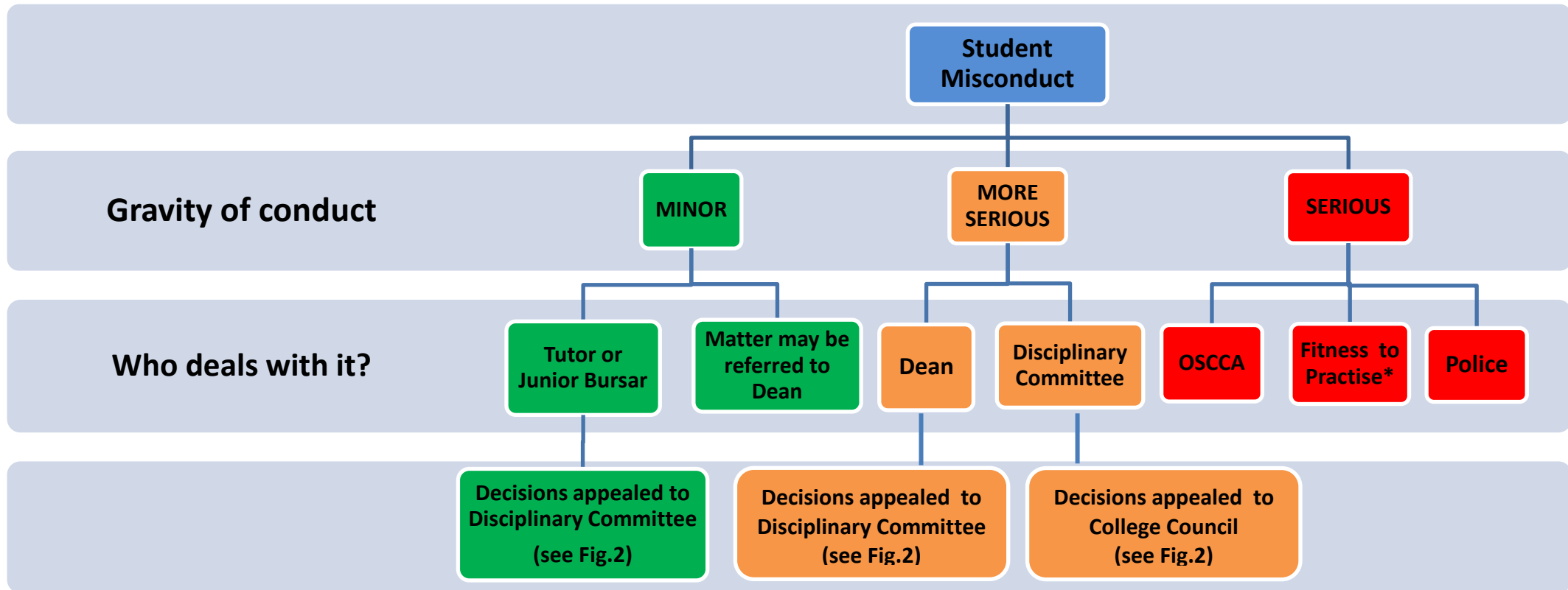
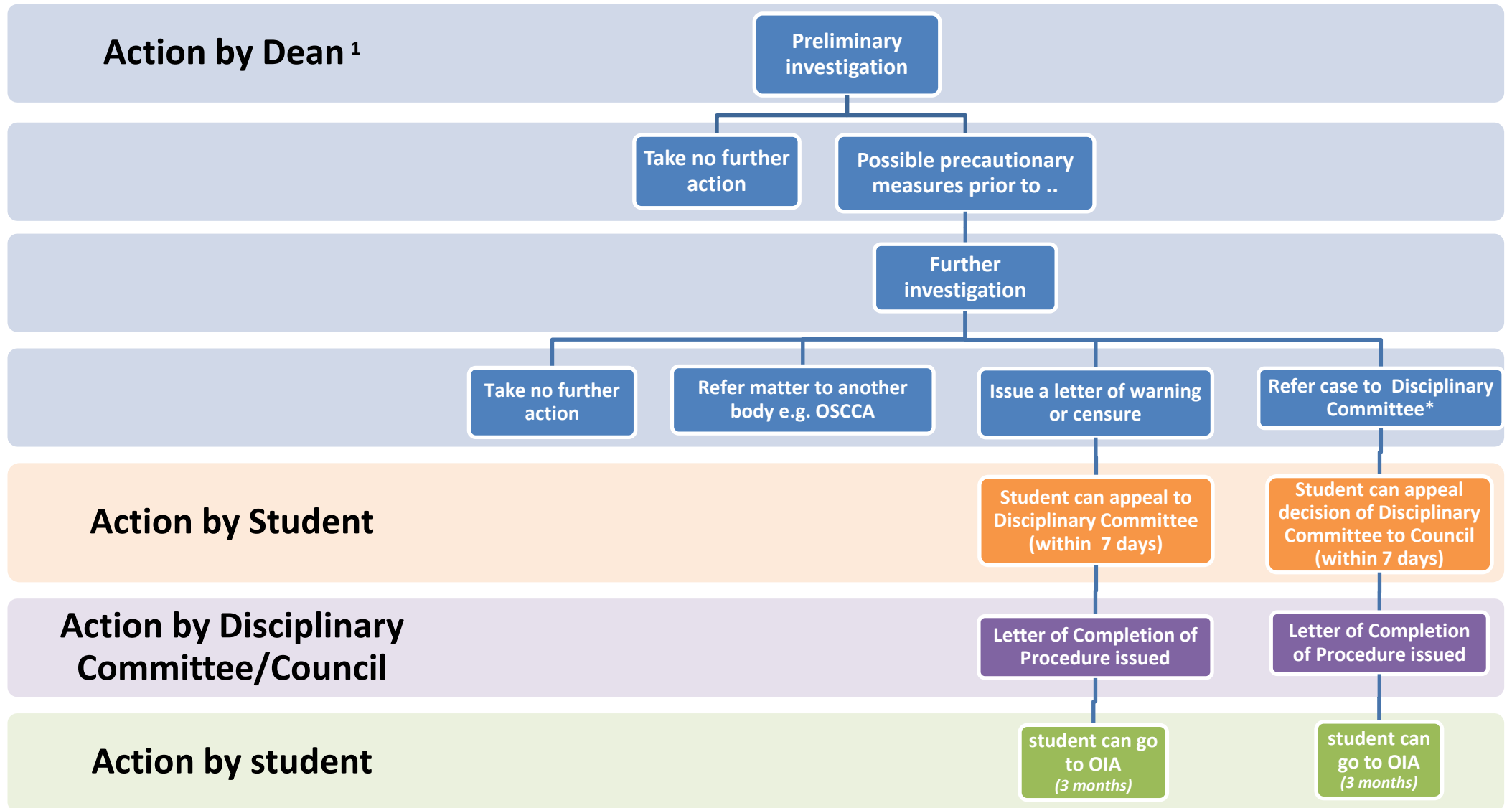


Fig.1 Disciplinary procedure: who deals with what?



\*Clinical students

# Fig.2 Disciplinary Procedure: process for more serious matters



<sup>1</sup>Within 60 days. Conclusions are often reached in about two weeks, but the length of investigation depends on the complexity of the case, including availability of witnesses and the welfare of those involved

\*to be set up by Council