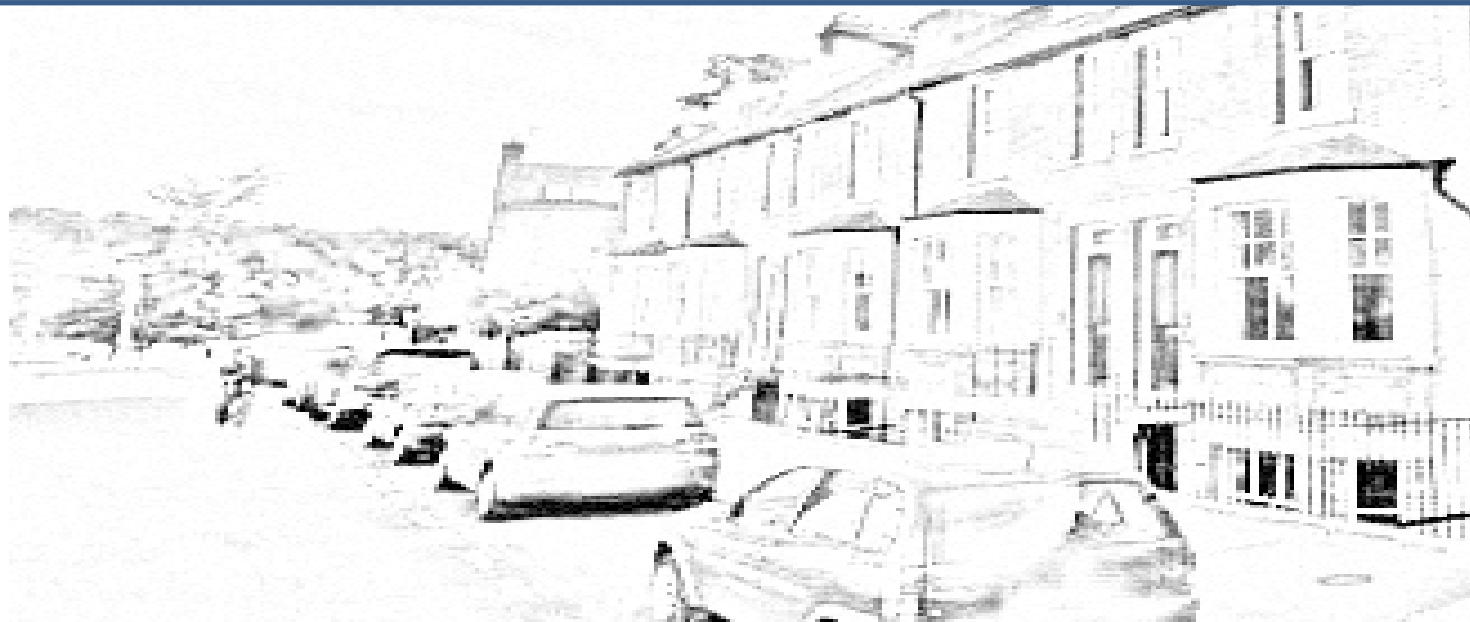


# Typical Rooms for Postgraduate Students

*Trinity College Accommodation Office*



**Accommodation Office Opening Hours:**

**Monday – Friday** 9.45am – 12.45 pm  
2.00pm – 4.30 pm

[accommodation@trin.cam.ac.uk](mailto:accommodation@trin.cam.ac.uk)



## Postgraduate Accommodation at Trinity College

---

Postgraduate students are not required to live in College-owned housing although Trinity aims to offer accommodation to all those who request it during the first three years of their course (i.e., during Terms of Research 1-9).

If you are coming to Trinity for the first time as a postgraduate student, you will be a Side F Fresher and will be assigned a room in College. Trinity members returning to start a postgraduate course will be able to apply for a Graduate Hostel room.

Postgraduate students taking a 'one year' course will be assigned a room until 31<sup>st</sup> August or completion of their course (if earlier).

If your course is longer than one year, you will be able to apply for accommodation in a graduate hostel until 31<sup>st</sup> August of your third year. College accommodation beyond this time would be subject to availability.

Rooms are allocated via a random ballot. You will be asked to give us your rent preferences in advance and also supply any relevant information about your accommodation needs or preferences. If you have a specific medical requirement relating to accommodation, it is important that you raise this at an early stage to ensure that we will be able to take them into account when allocating rooms. Rooms are assigned according to a ballot, so please be aware that it may not be possible to meet all preferences depending on your position in the list.

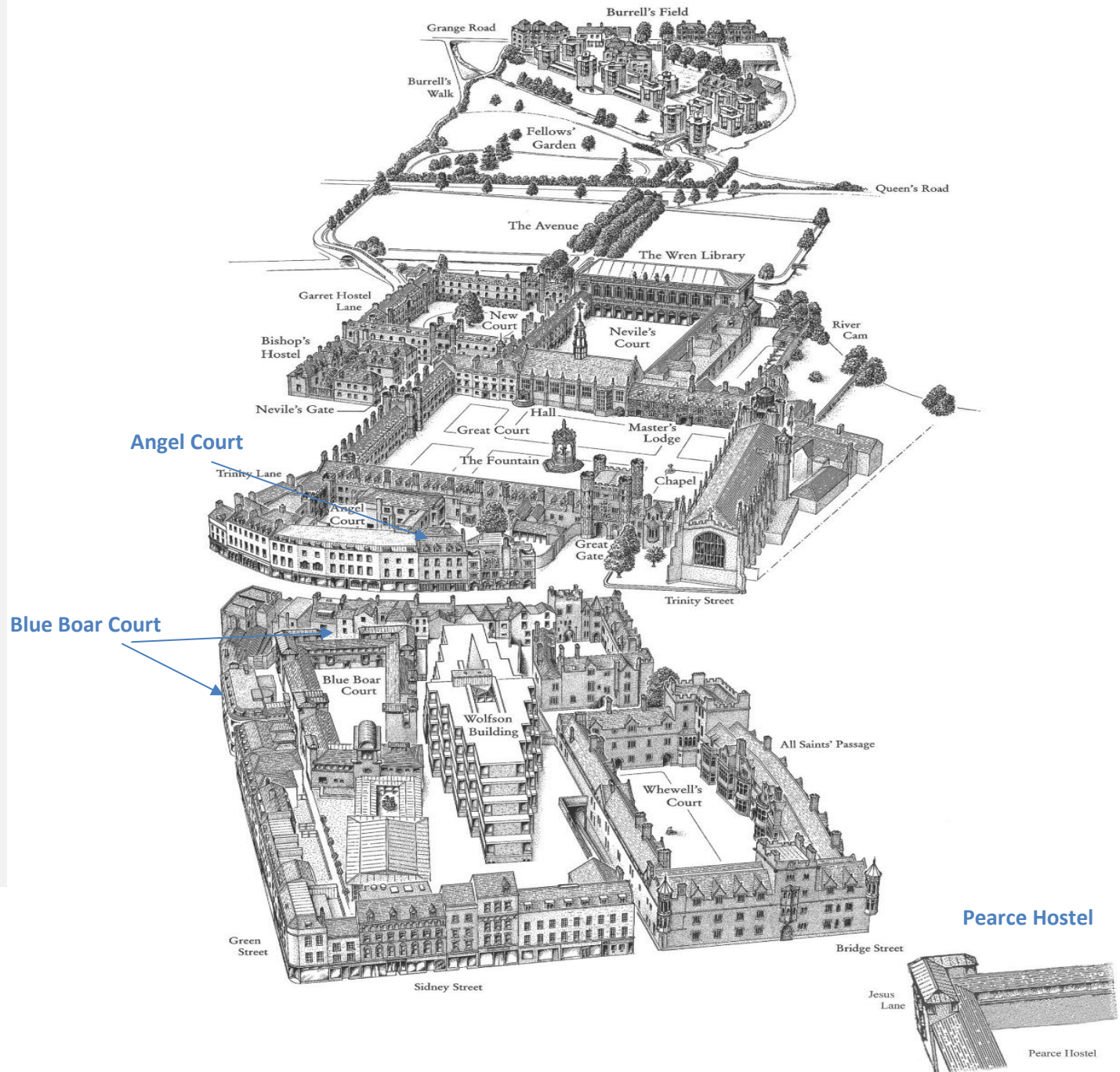
College rooms are for single occupation only; if you will be accompanied by a partner and/or children, please see our College Flats brochure for information about couples/family accommodation at Trinity College.

## Side F Fresher Rooms

Side F accommodation areas in College are mostly located in Angel Court and Pearce Hostel, but there are also a few rooms in Blue Boar Court. The room charges are determined according to the location, size and type of facilities provided for each room which means that rooms of the same price do not necessarily have the same facilities. For example, a large room that has shared bathroom facilities could be the same price as a smaller ensuite room.

Cafeteria and formal meals are provided in Hall, and so cooking facilities in College are limited and not all rooms will have access to a full kitchen.

Room Type	Approx. price per week (2024-25)
Bedsit with shared facilities	£161 - £183
Set with shared facilities	£188 - £203
Bedsit with en suite facilities	£161 - £197



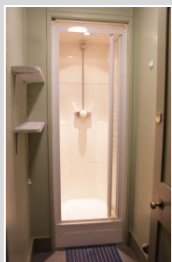
## ANGEL COURT

A number of (non en-suite) bedsits and sets on a staircases in Angel Court are reserved for Side F Fresher; sets are large rooms with a separate bedroom and study area. Many rooms here have sloping ceilings and feature fireplaces. All have sinks in the room, and shared bathroom facilities.



### Angel Court Shared Facilities

There are toilet and shower/bath rooms on each floor. Angel Court also has basic gyp rooms with a microwave, toaster and kettle for the preparation of simple meals.



## BLUE BOAR



The rooms in Blue Boar Court all have shared bathroom facilities.



### Blue Boar Shared Facilities

There are toilet and shower/bath rooms on each floor.



## PEARCE HOSTEL



The rooms in Pearce Hostel are located above shops in Bridge Street and Jesus Lane. The majority are en suite but there are also some with shared bathroom facilities. Most have access to full kitchens with ovens and hob,



### Pearce Hostel Shared Facilities

There are full cooking facilities on most staircases in Pearce Hostel.



## Graduate Hostel Accommodation (managed by Bidwells on behalf of the College)

Rooms for continuing or returning postgraduates are assigned via the Graduate Ballot. The rooms included in this process are Trinity's Graduate Hostels, which are located outside of College. There are a mixture of en suite and non-en suite rooms available. All hostels rooms are fully furnished with shared kitchen and laundry facilities. The majority of non en suite hostel rooms do not have a sink in the room.

Rents (which incorporates a charge for fair use of heating, lighting and water) are payable monthly in advance. A security deposit will also be payable with the first rent instalment. This is refundable at the end of the occupancy, provided the property has been left in a satisfactory condition.

All our postgraduate hostels are now connected to the College's IT network (included in the monthly rent).

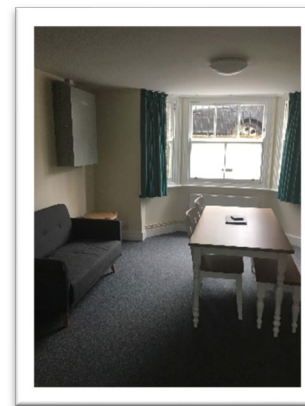
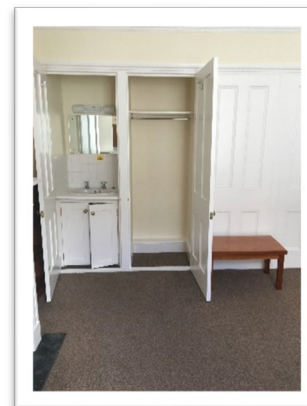
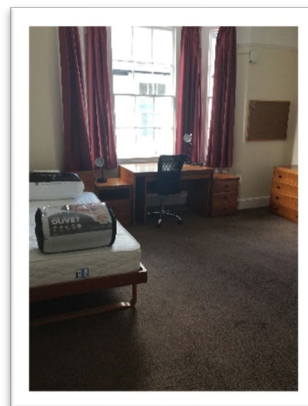
### Approximate prices for graduate hostels in 2024-25 are as follows:

- Single room with shared kitchen and bathroom facilities      £545 - £640 per month
- Single en suite room with shared kitchen facilities      £575 - £715 per month



### PORTUGAL STREET (CB5 8AP/CB5 8AW) AND PORTUGAL PLACE (CB5 8AF)

A number of non-en suite hostel rooms are available across several houses in Portugal Street (5 or 6 rooms to each house) and Portugal Place (5 or 8 rooms per house). These roads (off Bridge Street) are approximately 5 minutes' walk from the Great Gate entrance to Trinity. Their proximity to the centre of town, and to College itself, makes these rooms a popular choice every year. It also places these houses in a busy location; although few vehicles use the roads, nearby shops and restaurants (as well as the Maypole pub) mean there is usually activity in this area throughout the day and into the evenings.

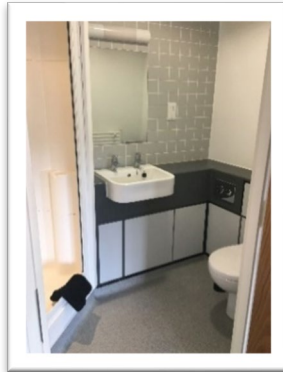
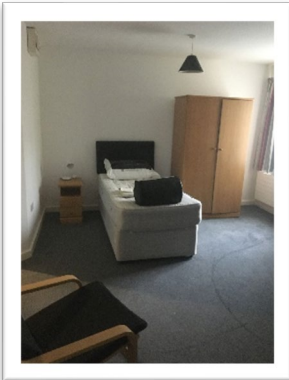
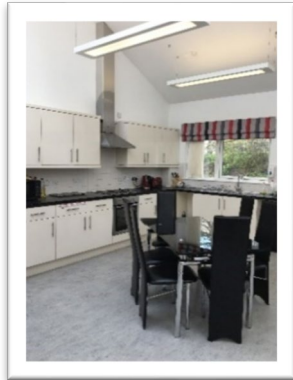
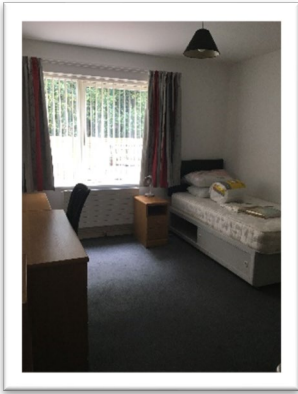


## WESSEX PLACE, MAGRATH AVENUE (CB4 3BL)

---

This modern hostel has 41 en suite rooms for graduate students. There are four large kitchens for the residents to share.

Situated near Castle Street, and approximately 15 minutes' walk from College, this hostel is an easy distance from town.



## 18 NEWTON ROAD (CB2 8AL)

---

At around half an hour's walk (or 10 minute cycle ride) from Trinity College, this is the furthest hostel from town. It is in a quiet residential area beyond the University Botanic Garden. There are 17 rooms in total (over 3 floors), 5 of which have en suite facilities. There is a shared kitchen and living area to the ground floor, and there are also bathrooms and kitchenettes on each upper floor.

There is a separate laundry facility that is also shared with the occupants of College flats located on the same site.



## RAMANUJAN HOUSE, ROUND CHURCH STREET (CB5 8AD)

---

This property built in 2021 is a 5-minute walk from the College and close to many amenities in the centre of town. It consists of 39 single graduate hostel rooms (1<sup>st</sup>-3<sup>rd</sup> floors) and six 1-bedroom flats for couples on the 4<sup>th</sup> floor. On the ground floor there will be a commercial unit.

There is a laundry room and a cycle store situated in the basement for use by all residents of the building.

