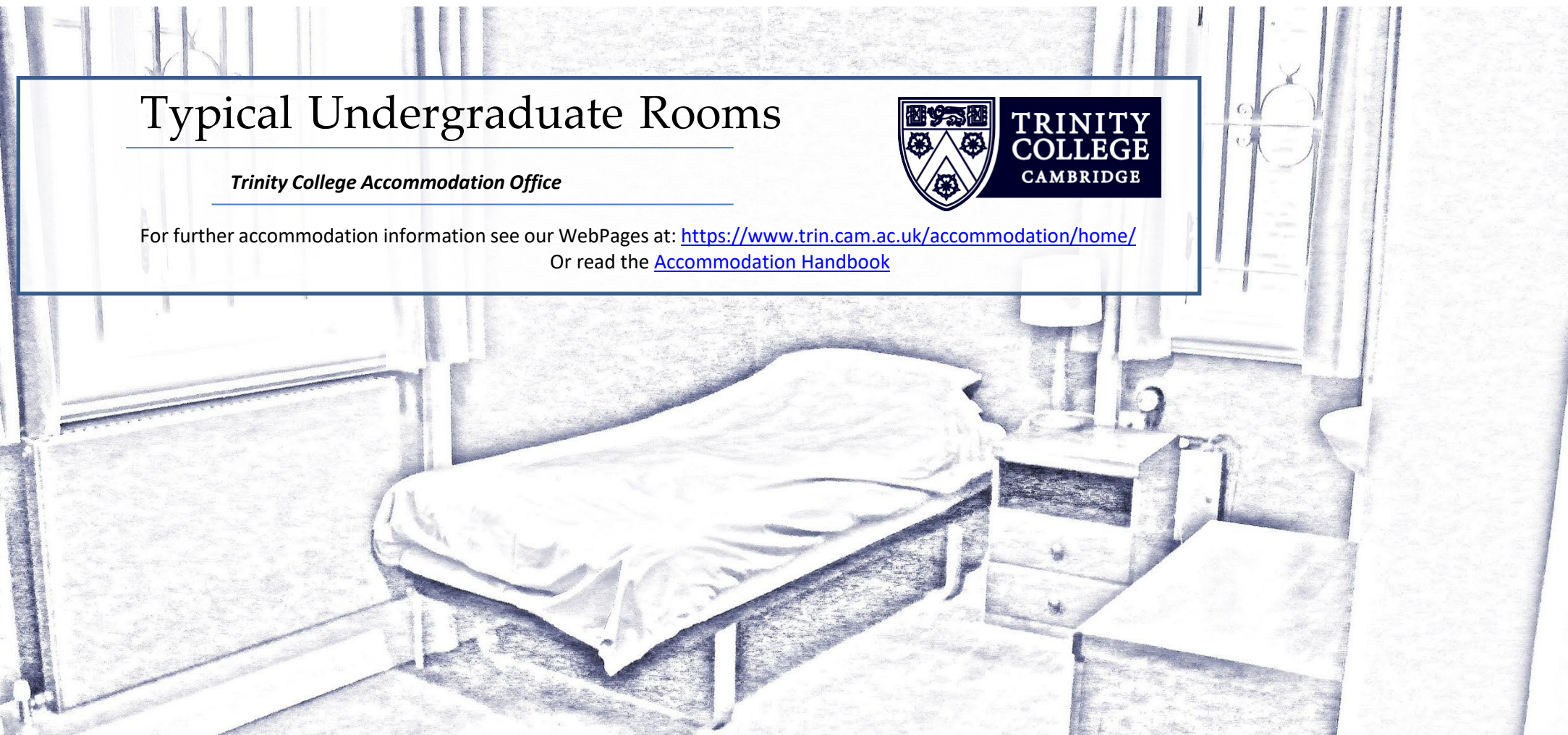


# Typical Undergraduate Rooms

*Trinity College Accommodation Office*



For further accommodation information see our WebPages at: <https://www.trin.cam.ac.uk/accommodation/home/>  
Or read the [Accommodation Handbook](#)



**Accommodation Office Opening Hours:**

**Monday – Friday** 9.45am – 12.45 pm  
2.00pm – 4.30 pm



[accommodation@trin.cam.ac.uk](mailto:accommodation@trin.cam.ac.uk)

## Typical Rooms

Trinity College has a wide variety of student rooms, and it is likely you will experience a range of accommodation types during your time here. The links in the College Plan on this page will take you to information about typical rooms available in each area, as well as the groups of students who are eligible to live there.

If you are a **prospective student**, you will be asked to apply for accommodation by completing a form prior to your arrival. We will allocate your room via a ballot based on the information you provide. **New undergraduates** can see the rooms which are included in their room ballot by clicking on any of the links entitled 'Undergrad freshers'.

If you are a **current undergraduate**, you will find information on each area which is included in your ballot (for second, third and fourth years) by clicking on the 'Main Ballot' links.

Undergraduate students accompanied by their spouse/children who wish to apply for a College flat should contact the Accommodation Office.

- [New Court](#)
- [Main Ballot](#)

### Bishop's Hostel

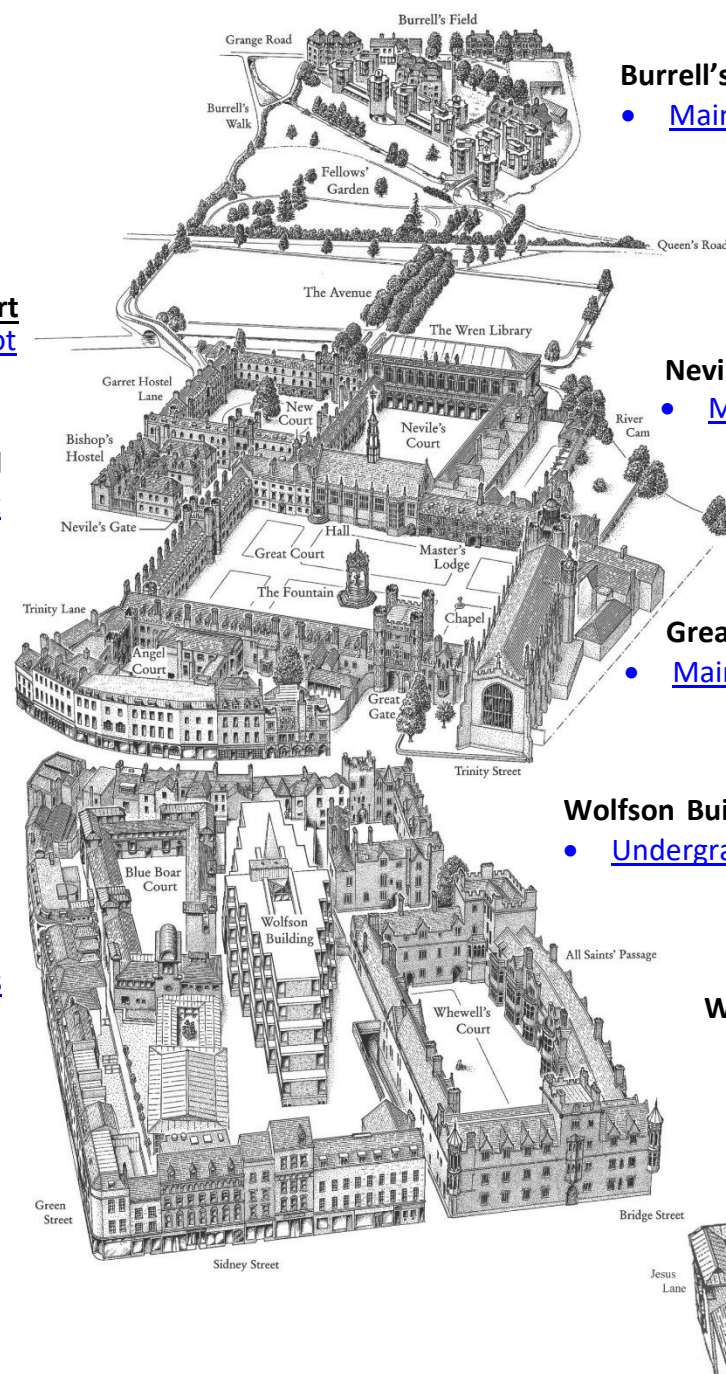
- [Main Ballot](#)

### Angel Court

- [Undergrad freshers](#)

### Blue Boar Court

- [Undergrad freshers](#)
- [Main Ballot](#)



### Burrell's Field

- [Main Ballot](#)

### Neville's Court

- [Main Ballot](#)

### Great Court

- [Main Ballot](#)

### Wolfson Building

- [Undergrad freshers](#)

### Whewell's Court

- [Main Ballot](#)

### Pearce Hostel

- [Main Ballot](#)



# Undergraduate Fresher rooms

Before you come up as a new undergraduate, you will be asked to rank your room preference by room charge (lower, medium, and higher bands). The room charge varies based on a number of factors, including location, size and facilities (there is not necessarily a certain type of room which you can expect to find in each band). You will be given the opportunity to supply any other relevant information about your accommodation needs or preferences. If there are specific medical requirements relating to accommodation, it is important that you raise this at an early stage to ensure that we will be able to take them into account before we allocate the rooms.

Please note that rooms are assigned in an order determined by a random ballot, so depending on where you come in the list, you may not be allocated a room which meets all of your preferences. In future years, you will have the opportunity to choose your own room via a ballot system.

## Freshers' Room Charges (2023-24)

Approx. price per week	Room Type
£136 - £201	Bedsit & sets with shared bathroom facilities
£151 - £172	En suite bedsit



An Angel Court fresher room. This is a bedsit, with access to a shared bathroom and 'gyp' (basic kitchen).

### ANGEL COURT

Many freshers are accommodated in this area near Great Gate, in rooms above shops in Trinity Street. These rooms are mostly bedsits (single rooms), with a small number of sets. There are no en suite rooms in Angel Court.



Shared bathroom facilities in College will usually consist of separate shower and toilet rooms. Some staircases also have access to a bath.

College 'gyp' rooms are shared basic kitchens to allow for the preparation of simple meals and snacks. This Angel Court gyp room has a microwave and fridge, with counter space to prepare food and a sink for washing up. This gyp is typical of central College facilities.





## WOLFSON BUILDING

The Wolfson Building is a dedicated fresher accommodation area, with single rooms in a modern building within Blue Boar Court. Most rooms here are en suite bedsits, however there are some cheaper non-en suite rooms available.



A typical Wolfson en suite room.



This Wolfson gyp room has a microwave, toaster, sink and fridge, as well as a full oven with hobs. Kitchens with full cooking facilities are the exception at Trinity, as most students will eat their main meals in Hall.



## BLUE BOAR

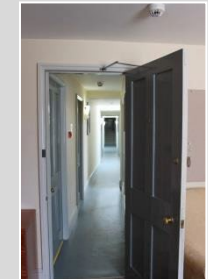
This area is reached by climbing steps up from ground level, meaning that the 'ground floor' of Blue Boar is actually closer to first floor level from the streets below. There are several Fresher areas here; while some of these are en suite, the majority have shared bathroom facilities.



A Blue Boar bedsit, with a sink in the room but shared bathroom facilities with the rest of the staircase.

### Shared facilities

Students in some Blue Boar areas will have access to full gyp rooms with ovens, similar to those in the Wolfson building. However, most gyp rooms here are more like the basic ones in Angel Court.





# Undergraduate Rooms - Non-Fresher Areas



## Bishop's Hostel

Bishop's Hostel is situated between Great Court and Garrett Hostel Lane. There are a few double sets for students who wish to share a living area, but the majority of rooms here are single sets. Many of these rooms have both a private gyp room and en suite bathroom. Bishop's Hostel rooms are very popular at the top of the main ballot, and are so are often occupied by Scholars and third year students.

### Bishop's Hostel Room Rents (2023-24)

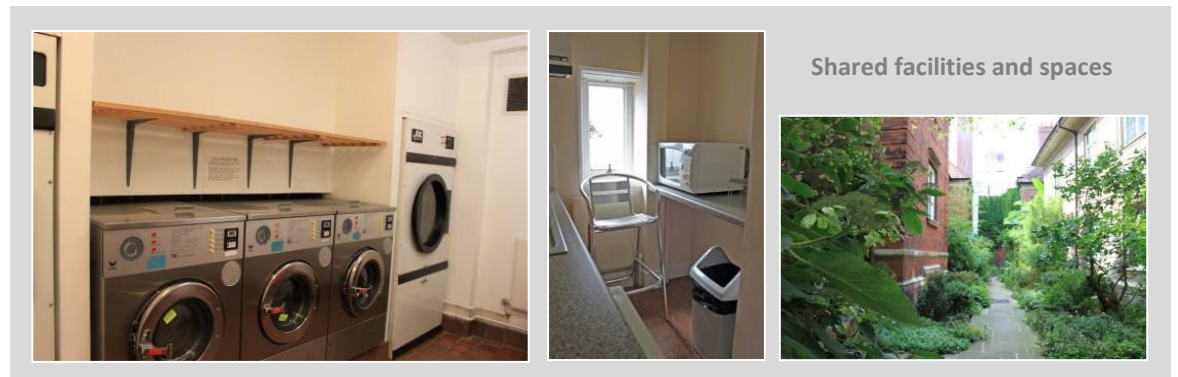
Approx. price per week	Room type
£125 - £160	Double set or bedsit in E/F Bishop's Hostel, most with shared bathroom facilities
£177 - £196	Bedsit or set in A/C Bishop's Hostel. The majority have a gyp room and/or en suite; some have shared facilities.



An attic set in 'A' Bishop's Hostel. This bedroom is adjacent to a spacious living room.



This is a large ground floor bedsit with its own gyp room and en suite.



Shared facilities and spaces



## Blue Boar Court

Blue Boar Court is accessed through Whewell's Court (the main entrance to which is opposite Great Gate). It is reached by climbing steps up from ground level, meaning that the 'ground floor' of Blue Boar is actually closer to first floor level from the street.

There is a mixture of accommodation here, with rooms available across a range of price bands. En suite and non-en suite rooms can be found, and this is the only area of College with baths in some of its en suite rooms. Basic gyp rooms are the norm; they will have a fridge and kettle plus a microwave and/or toaster (space dependent).

### Room Rents in Blue Boar (2023-24)

Approx. price per week	Room type
£139 - £163	Bedsit or set with shared bathroom facilities
£156 - £187	En suite set or bedsit (with bath or shower).



Rooms in staircases A-H Blue Boar are all similar in style. All of these rooms have an en suite bathroom; but some have a bath rather than a shower. This bedsit in D staircase has an en suite with bath.

### Shared facilities and spaces



Elsewhere in Blue Boar Court, the majority of rooms available in the main ballot have shared bathrooms. These Blue Boar bedsits fall into lower to mid-range room charges.





# Burrell's Field

Burrell's Field is accessed through the Fellows' Garden (over the river and a road from central College). Rooms are available for current undergraduates via the main ballot (2<sup>nd</sup>, 3<sup>rd</sup> and 4<sup>th</sup> years). Rooms in Burrell's Field are typically well-equipped, and many are en suite. Most rooms are arranged around staircases in purpose-built accommodation blocks or towers, but there are also four houses whose rooms have a more traditional feel. A short walk from the centre of Trinity, Burrell's Field is particularly convenient for departments based along The Backs, including those at the University's Sidgwick Site.



A modern single set in a tower staircase (H-U).

An inexpensive Burrell's Field bedsit. There is a sink in the room, and access to a shared bathroom nearby (A-H, Y & Z).



**Burrell's Field Shared Facilities**  
Burrell's Field has well-equipped shared facilities for its residents. Some kitchens have hobs for the preparation of occasional meals.



## Room Rents in Burrell's Field (2023-24)

Approx. price per week	Room Type
£123 - £173	Bed sit with shared bathroom facilities
£156 - £183	Set or bedsit with en suite

The Burrell's Field houses (G,V,W,X) are large and pleasant, with communal cooking and dining areas for their residents. There are en suite rooms in every house, but some rooms here have shared bathroom facilities.



# Great Court



Rooms in Great Court are made available via the main ballot. The rooms do not have en suite facilities, but the setting within Trinity's grand 16<sup>th</sup>-century court is appealing to those who like the traditional feel.

To allow as many undergraduates as possible the opportunity to experience a Great Court room (should they wish to), no student can live in Great Court for more than one year while at Trinity.

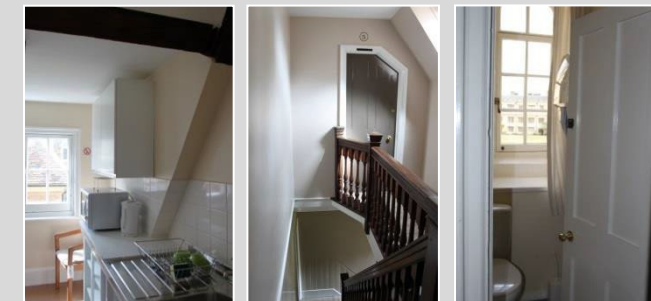
## Room Rents in Great Court (2023-24)

Approx. price per week	Room Type
£128 - £227	Bedsit and sets with shared bathroom facilities.

There are a few double sets in Great Court. These rooms have 2 single bedrooms and a shared living room space.



The majority of rooms in Great Court are non-en suite single sets, meaning rooms with a separate bedroom and main room. Most of these have a sink in the room.



Shared facilities and spaces





## Nevile's Court

Nevile's Court is an attractive 17<sup>th</sup>-century court in the centre of Trinity; on one side is the Great Hall, and on the other the Wren Library. A small number of rooms are available here for students via the main ballot.

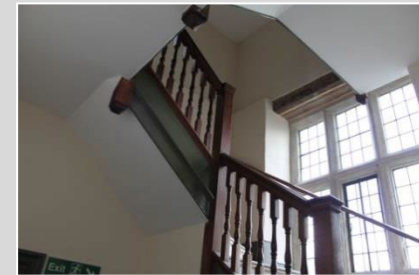


Rooms in Nevile's Court tend to be full of character, with interesting architectural features.



A roomy single set in Nevile's Court, with sloping ceilings and exposed wooden beams.

### Shared facilities and spaces



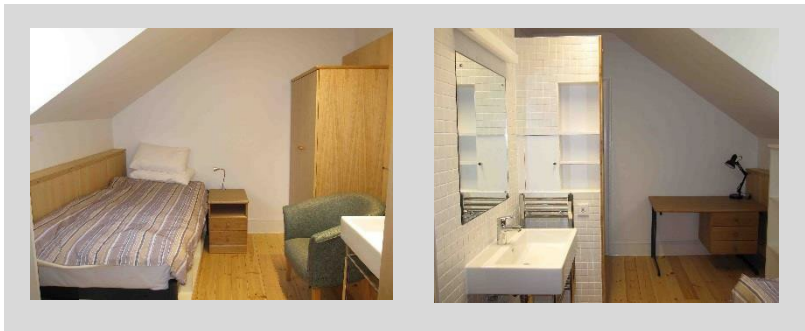
### Room Rents in Nevile's Court (2023-24)

Approx. price per week	Room Type
£172 - £200	Single sets with shared bathroom facilities

# New Court

New Court is a large 19<sup>th</sup>-Century courtyard between Great Court and the river Cam which was refurbished in 2015.

There is a mixture of accommodation here across all price bands. There are en suite and non en suite rooms of varying sizes with shared facilities on every staircase.



A small bedsit in B New Court



A large en suite bedsit in 'F' New Court. All rooms in New Court have underfloor heating and a sink in the room.

## New Court Room Rents (2023-24)

Approx. price per week	Room type
£131 - £172	Bedsit with shared facilities
£158 - £202	En suite bedsit



There are some rooms in New Court with shutters and others with curtains.



# Pearce Hostel

Trinity has a number of rooms available for 2<sup>nd</sup>, 3<sup>rd</sup> and 4<sup>th</sup> year undergraduates in Pearce Hostel, a building on the other side of Whewell's Court from central College. Rooms are all above street level, and situated in buildings between Jesus Lane and Bridge Street.

## Room Rents in Pearce Hostel (2023-24)

Approx. price per week	Room Type
<b>£127 - £195</b>	Bedsit or set with shared bathroom facilities
<b>£166 -£205</b>	En suite bedsit or set



This is a single bedsit in Pearce Hostel with shared bathroom facilities. It is at the lower end of the rent range for College rooms.

Larger and/or en suite rooms in Pearce Hostel are more expensive.



A variety of accommodation types in Pearce Hostel means that rooms here will suit many different students. Full kitchens are provided for the preparation of more substantial meals.





## Whewell's Court

Many second- and third-year students choose to live in Whewell's Court, an attractive 19<sup>th</sup>-century courtyard opposite the Great Gate entrance to Trinity. Rooms here are all non-en suite; they are predominantly single sets, with a handful of bedsits and some shared sets (for 2 students who wish to share a living room space).

The shared bathroom facilities are situated in the basement below the courts, and there is also a laundry here. A select number of Whewell's Court rooms have their own personal mini-gyp rooms with a fridge, sink and food preparation area. Space-dependent, there will be a microwave and/or toaster in these rooms as well.



All Whewell's Court rooms have shared bathroom facilities but the bedrooms are equipped with a washbasin.

Shared facilities



### Room Rents in Whewell's Court (2023-24)

Approx. price per week	Room Type
£120 - £153	Bedsit or double set with shared bathroom facilities; many with mini-gyp rooms.
£149 -£204	Single set, most with gyp rooms included. All have shared bathroom facilities.



Whewell's Court sets are pleasant spaces to live arranged around a small central lawn.